

Badge Tag



AT-CARD-MT

SPECIFICATION

The Enlighted Badge Tag is a part of Enlighted's Real-Time Location Service (RTLS) solution. Designed to be worn by an individual, the tag transmits Bluetooth Low Energy (BLE) advertisements received by the Enlighted Sensor Network and communicated to the location server for computation of real-time location information.

OVERVIEW

Designed to be worn by individuals, the Enlighted Badge Tag has an IP65 rated enclosure designed to handle a variety of applications and environments. The integrated, non-replaceable battery has a two-year lifetime with typical use.

The tag is designed to be worn as a badge and has an opening compatible with badge holders. An optional adhesive patch is supplied with the tag for mounting on flat surfaces. Each tag transmits its unique ID and proprietary advertising message ensuring that only valid tags are received by the Enlighted Sensor Network and Location Intelligence application.

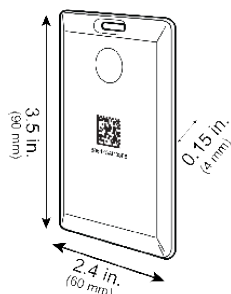
FEATURES

- Broadcasts Bluetooth Low Energy (BLE) advertisements
- The 3-axis accelerometer detects motion and adjusts advertising rate to optimize battery life
- Pressing Power button and keeping on for 3 seconds, the LED lights on for 5 seconds then off, for the device to be activated.

DATA PRIVACY

The Enlighted Badge Tag broadcasts BLE beacons received by Enlighted sensors to compute the location of the tag. The tag does not have the ability to directly reference, distinguish or identify any natural person or the asset it might be associated with.

DIMENSIONS



The Enlighted Badge Tag			
Body	L	3.5"	90 mm
	W	2.4"	60 mm
	H	0.15"	4 mm
	Weight	0.64 oz	18 gms

TECHNICAL SPECIFICATIONS

Sensor Case: White waterproof plastic

Operating Temp: -20 to 50 °C/
-4 to 140 °F

Enclosure: IP65 rating

Battery: Two years typical use

ORDERING INFORMATION

AT-CARD-MT

AT-1U-H1

AT-BUTTON-WBAND

AT-BUTTON

Enlighted C10 Badge Tag

Enlighted Asset Tag 1U

Enlighted Button Wristband Tag

Enlighted Beacon Tag

COMPLIANCE

Europe



United States



The Bluetooth® word mark and logos are registered trademarks owned by Bluetooth SIG, Inc. and any use of such marks by Enlighted Inc. is under license. Other trademarks and trade names are those of their respective owners.