

# Touchless Workplace

Create delightful workplace environments



## Your partner for employee health and safety

Enlighted offers a comprehensive solution to facilitate, operate, and utilize comfortable, safe, and productive work environments.

**220K**

Employee users

**95M**

Square feet managed office space

**1.1M**

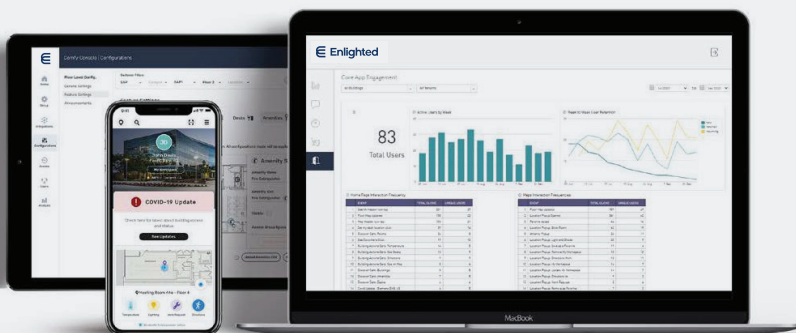
Touchless controls executed

**2.5**

Average weekly uses (exclusive of elevators)

## Create trusted workplaces

Ensuring employee well-being is a top priority when returning employees to physical workplaces. However, the prospect of leaving the safety, comfort, and flexibility of home can cause employees some concern. With employee satisfaction and retention in the balance, one effective avenue to successfully promote in-office collaboration is to implement technology tools and processes that ensure optimum comfort and control over their work environment.



### Challenge

Complicated environmental controls cause discomfort and frustration for employees and unnecessary service calls for facilities teams.

### Solution promise

Enable personalized control of the workplace through a mobile-first experience.

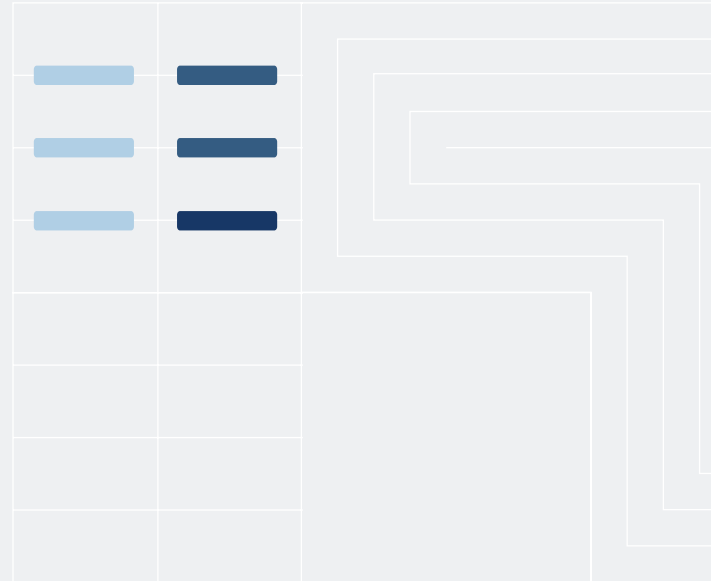
### Value delivered

Increase employee well-being and satisfaction with the workplace while reducing the risk of contagion and improving facility operations.

## Enable touchless control

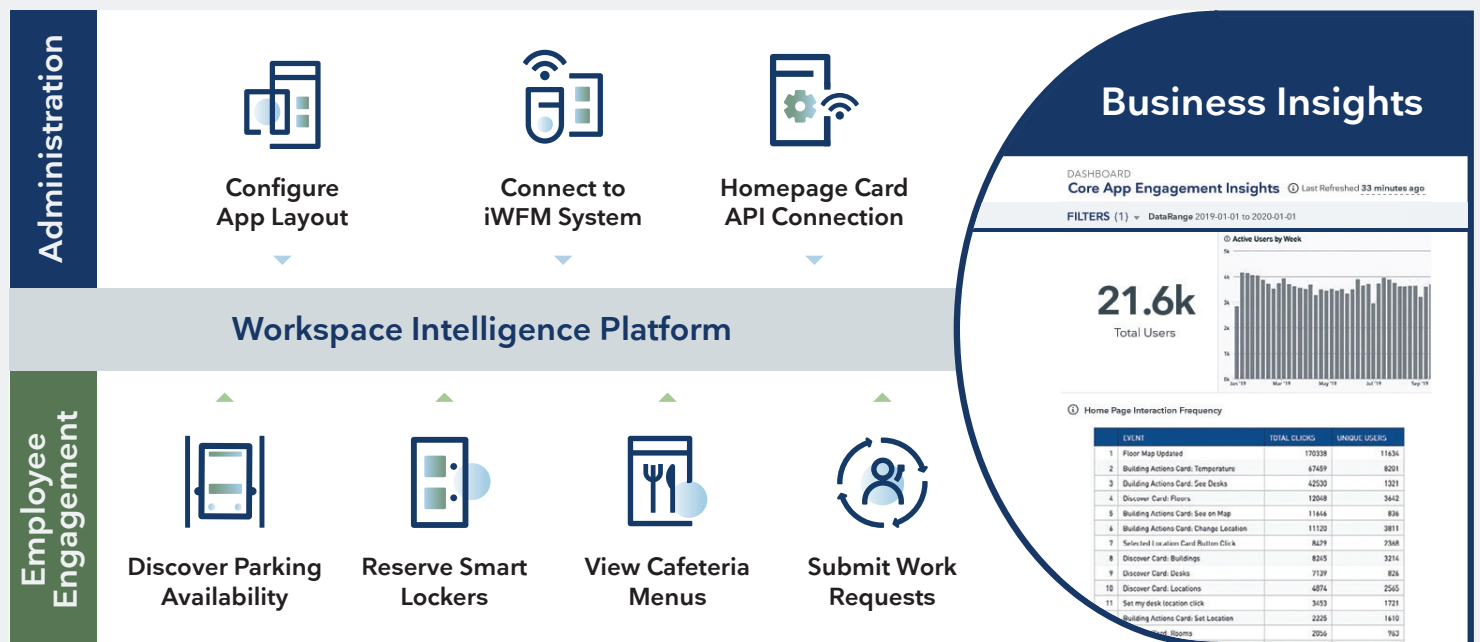
Enlighted's Touchless Workplace solution empowers employees with touchless control of temperature, lighting, shading, and elevator movement. This automation will significantly reduce high-risk touchpoints, providing employees with a safe, comfortable, and productive work environment.

- **Free up facilities resources:** Automated controls reduce work orders and limit the amount of necessary on-site staff.
- **Lower overall energy consumption by up to 20 percent:** Widen HVAC deadbands in areas with limited activity and reduce over-conditioning.
- **Boost productivity and comfort:** On-demand environmental control increases employee satisfaction and confidence in the modified workplace.
- **Mitigate risk:** Reduce liability and ensure business continuity.
- **Understand employee actions:** Utilize data to inform employee communications which encourage safe behavior.



## The intersection of employee engagement and building portfolio management

The Corporate Amenities solution integrates data from employee actions into the Workspace Intelligence Platform to provide deep business insights for facilities management.



## Touchless Workplace solution overview

The Touchless Workplace solution includes a comprehensive set of capabilities for real-estate executives, program administrators, and employees to implement, manage, and utilize touchless environmental control.

### Administration and business functions

Function	Capabilities	Benefits
<b>Connect to Building Management Systems</b>	<ul style="list-style-type: none"> <li>The Enlighted Gateway device connects to the BMS via BACnet/IP network and to the cloud through an outbound internet connection</li> </ul>	<ul style="list-style-type: none"> <li>Touchless Workplace works with any BACnet-enabled HVAC system</li> <li>Enlighted's robust partner network enables deployment across global portfolios with diverse building management systems (BMSs)</li> </ul>
<b>Configure Floor Maps</b>	<ul style="list-style-type: none"> <li>Import and digitize floor maps to configure the workspace for environmental controls</li> <li>Designate and modify specific zones for employee control</li> </ul>	<ul style="list-style-type: none"> <li>Provide employees with intuitive, location-specific control over their workspaces</li> </ul>
<b>Control Workplace Environment</b>	<ul style="list-style-type: none"> <li>Understand employee temperature preferences and better control energy use</li> </ul>	<ul style="list-style-type: none"> <li>Significantly reduce the hot/cold calls to the facilities team</li> <li>For zones with limited activity, widen HVAC deadbands to lower operating costs</li> <li>Save up to 20 percent of HVAC energy costs by reducing over-conditioning</li> <li>Increase lighting efficiency</li> </ul>
<b>Control Workplace Environment</b>	<ul style="list-style-type: none"> <li>Insights captures and visualizes user actions</li> <li>Interactive and customizable analytics on environmental control trends and PIs</li> <li>Extract data into preferred business intelligence tools via Enlighted's Insights Access API</li> </ul>	<ul style="list-style-type: none"> <li>Understand employee usage and identify areas to optimize default environmental settings</li> <li>Analyze employee engagement</li> <li>Incorporate data into employee health and safety communications</li> </ul>

## Employee functions

Function	Capabilities	Benefits
<b>Touchless Temperature Control</b>	<ul style="list-style-type: none"> <li>On-demand control to warm or cool a space</li> <li>Machine learning identifies personal temperature preferences and proactively applies them over time</li> <li>See warm and cool areas in real-time via floorplans with heatmaps</li> </ul>	<ul style="list-style-type: none"> <li>Personalized, on-demand temperature control</li> <li>Reduce high-touch thermostat usage</li> </ul>
<b>Touchless Lighting Control</b>	<ul style="list-style-type: none"> <li>Import and digitize floor maps to configure the workspace for environmental controls</li> <li>Designate and modify specific zones for employee control</li> </ul>	<ul style="list-style-type: none"> <li>Quickly and conveniently modify an area's lighting to one that is most conducive to productivity</li> <li>Reduce high-touch lighting control panel usage</li> </ul>
<b>Touchless Shading Control</b>	<ul style="list-style-type: none"> <li>Understand employee temperature preferences and better control energy use</li> </ul>	<ul style="list-style-type: none"> <li>Employees can create ideal shading for their working environment</li> <li>Enable touchless shade control</li> </ul>
<b>Touchless Elevator Control*</b>	<ul style="list-style-type: none"> <li>Call and operate elevators using the application</li> </ul>	<ul style="list-style-type: none"> <li>Reduce high-touch surfaces throughout the building</li> </ul>

\*Add-on feature as part of Enlighted's Corporate Amenities Solution



## Actionable insights

Understand how your employees are interacting with your facilities using Touchless Workplace and make well-informed decisions.



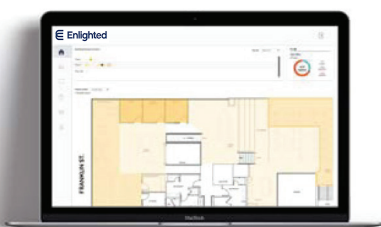
**Environmental Control Engagement**

- Understand how employees control the temperature in their environments
- View how employees set the lighting and shading for the various office environments
- Identify the types of spaces where the default environmental settings can be optimized



**Building Temperature Performance**

- View the temperature deadband improvements for each of the buildings in your portfolio
- Plan for optimal deadband setting for future building operations



**Utilization Maps**

- Drill in to understand environmental control requests in certain areas by frequency, type, and user
- Identify specific areas with the highest control request frequency and then improve their default settings